



**Stamford American**  
INTERNATIONAL SCHOOL

# Stamford American International School

Inspiring Students to create their own unique future







**Stamford American**  
INTERNATIONAL SCHOOL



## Welcome to Stamford American International School

Stamford American International School is a leading international school in Singapore, welcoming students from 18 months to 18 years old. With a diverse community of over 3,000 students from 79 countries across two campuses, we provide a dynamic and enriching education that prioritizes both academic excellence and student well-being.

### VISION

**Inspiring** students  
to **create** their **unique** future

### MISSION

**Together**, we cultivate a culture of **optimism**,  
**excellence** and **empowerment**  
for everyone by developing the mind-set and  
skills to *thrive* in a complex world



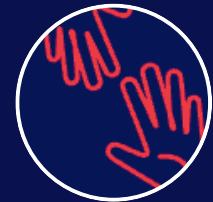
**Integrity**



**Courage**



**Ingenuity**



**Compassion**

Join us at Stamford American International School, where we inspire every student to unlock their potential, embrace innovation, and achieve excellence in a nurturing and forward-thinking environment.





# Index

- Stamford American Summary..... 4
- Early Childhood Education..... 5
- Elementary School..... 7
- Middle School..... 9
- High School: Diverse Pathways to Excellence..... 10
- Language Learning Program..... 14
- English Acquisition Program..... 17
- Stamford’s Holistic Education..... 18
  - Music and Arts..... 19
  - Innovation Space and Digital Learning..... 20
- Campus Life..... 22
- Access and Admissions Process..... 23



# Stamford American Summary



## Our Students

Total count of students  
**+ 3000**

### Early Years

from Pre-Nursery to Kindergarten 2  
(18 Months to 6 years old)

### Elementary School

from Grade 1 to Grade 5  
(6 years old to 11 years old)

### Middle School

from Grade 6 to Grade 8  
(11 years old to 14 years old)

### High School

from Grade 9 to Grade 12  
(14 years old to 18 years old)

Teacher to student ratio by grade level



Teachers and Academic  
Leadership Team



**394 educators**

Average  
career  
experience:

**12.18 years**



Faculty and staff  
educational attainment:

**Master's degree  
or above**



## Diversity ratio







# Early Years

(from Pre-Nursery to Kindergarten 2)

*Nurturing a passion for knowledge*

## Building the journey of lifelong learning

At Stamford American Early Learning Village, we nurture curiosity, confidence, and a love for learning in children from two months to six years.

Our purpose-built preschool is a safe, inspiring, and joyful space where young minds thrive. Through a strong partnership between home and school, we create a foundation of trust, ensuring every child feels valued and supported on their educational journey. Give your child the best start in a place designed for discovery, growth, and endless possibilities.

## Inspired by Reggio Emilia, Designed for Discovery

At our Early Learning Village, we embrace the **Reggio Emilia philosophy**, where curiosity drives learning and every child's voice is valued.

Our thoughtfully designed spaces—crafted by visionary architects—encourage exploration, creativity, and collaboration in every corner. In this dynamic environment, children are empowered to ask questions, experiment, and develop a lifelong love for learning.

- 6 outdoor playspaces for adventure and enjoyment
- 20-meter swimming oasis
- "The Hive," a climate-controlled indoor gymnasium



## Suzuki method for violin and cello

We proudly offer the Suzuki Inspired Program for children. PreK and KG1 students focus on learning the Violin, transitioning to cello from KG2.

More than just music, the Suzuki philosophy nurtures focus, confidence, and creativity through encouragement, listening, and collaborative learning. Engaging with the violin enhances concentration and emotional awareness, empowering young musicians to express themselves and grow.

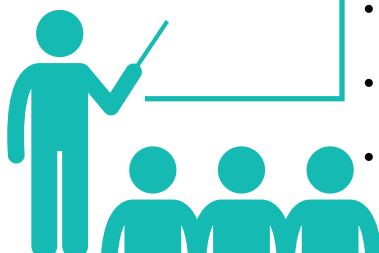
Option to add additional one on one classes for the full Suzuki program.

## Adaptable timetable

**A full-time program is offered for every grade level.**

- PreNursery - PreK - 5 half day, 3, 4 5 full days
- KG1 - 5 half day and 5 full day
- KG2 - full day only

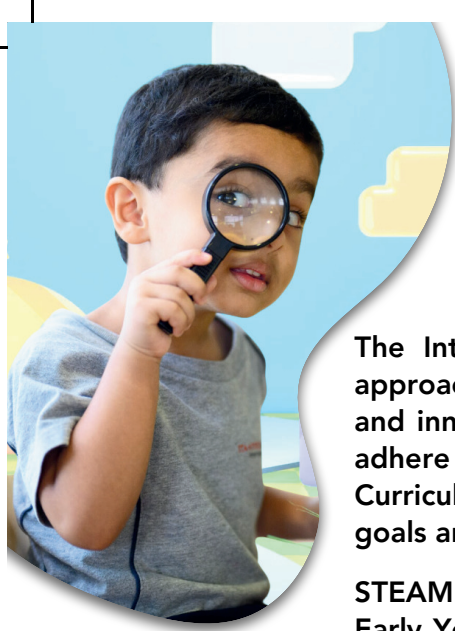
## School News



- Parents Portal Update
- Weekly Bulletin x 1
- Quarterly Report x 4





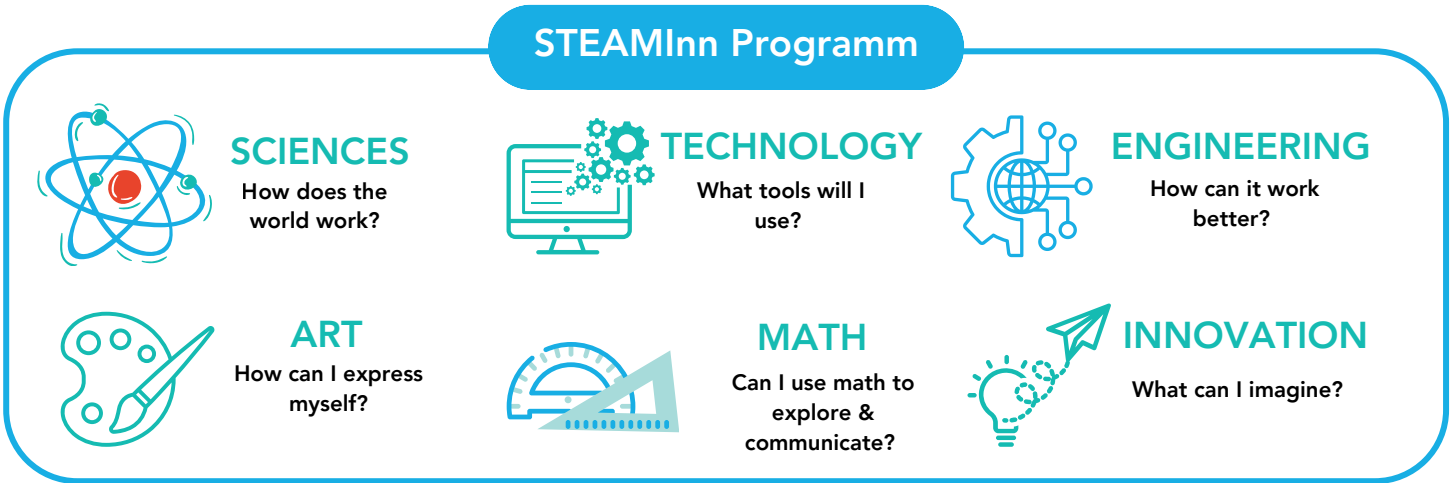


# Early Years

(from Pre-Nursery to Kindergarten 2)

The International Baccalaureate (IB) Primary Years Programme (PYP) is a holistic approach that weaves together science, technology, engineering, arts, mathematics, and innovation (STEAMInn) from Pre-Kindergarten to Kindergarten2. In addition, We adhere to American educational standards and base our teaching on The Creative Curriculum © and Teaching Strategies Gold, which define developmentally suitable goals and objectives.

STEAMInn is woven into the fabric of the PYP Unit of Inquiry as learning unfolds in Early Years. Our Early Year Programme is designed to equip students for a seamless transition to Grade 1 at our Woodleigh Campus in Stamford.



## Second language program in Chinese or Spanish

Our school believes multilingualism is key to global citizenship and nurtures it from the earliest years. Native-speaking educators immerse students daily in Chinese or Spanish, while PreK students can opt for full Chinese-English bilingual immersion. Through cultural activities and celebrations, students gain firsthand experience in embracing diversity.



## Empowered Learning at Every Step

Our specialist teachers in music, Physical Education, languages, and art & design provide expert instruction, fostering diverse skills from an early age through a world-class program.

| Grade   | Age       | Daily Foreign Languages | General Music | Suzuki Program | Physical Education | Numeracy | Art / Design | Library & Litteracy |
|---------|-----------|-------------------------|---------------|----------------|--------------------|----------|--------------|---------------------|
| PreN    | 18 months | ✓                       | ✓             |                | ✓                  | ✓        |              | ✓                   |
| Nursery | 2         | ✓                       | ✓             |                | ✓                  | ✓        |              | ✓                   |
| PreK    | 3         | ✓                       |               | ✓              | ✓                  | ✓        |              | ✓                   |
| KG1     | 4         | ✓                       | ✓             | ✓              | ✓                  | ✓        | ✓            | ✓                   |
| KG2     | 5         | ✓                       | ✓             | ✓              | ✓                  | ✓        | ✓            | ✓                   |





# Elementary School

(from Grade 1 to Grade 5)

## Discovering the art of learning

Discover the transformative power of Elementary education at Stamford American International School, where we believe that enjoying school is paramount to success. We prioritize creating a safe, nurturing environment where every student feels seen, valued, and happy to learn.

Our holistic approach fosters a love of learning that ignites curiosity and drives academic achievement. Join us in empowering your child to thrive academically, socially, and emotionally as they embark on a journey of growth, discovery, and lifelong learning.

Stamford American Elementary School is designed for students from 6 to 11 years of age.

## A Dynamic Curriculum for Lifelong Success

Our curriculum empowers students with essential skills across diverse fields, fostering confidence, creativity, and critical thinking intertwined with modern technology to equip students for the future ahead.

### Approaches to Learning

These are cross-curricular skills integrated into every facet of learning, from explicit teaching and inquiry based learning in the homeroom and specialist lessons, to field studies, co- curricular activities, sports competitions, and artistic performances.

- Communication skills
- Research skills
- Thinking skills
- Social skills
- Self-management skills

### International Mindedness

- Embracing diversity and commonalities
- Engaging and learning about the local Communities
- Fostering unity among youth
- Developing integrity and confidence



### Social-Emotional Learning and Wellbeing

Each week, all students participate in a structured advisory program focused on social- emotional learning (SEL), which includes weekly online check-ins and the Second Step program. This approach helps students develop emotional literacy, understand how their brain works, and build essential skills for maintaining positive relationships and effective self-management. In the Elementary school, our program emphasizes four key areas: learning skills and strategies, developing empathy, emotional regulation, and problem-solving, laying a strong foundation for students’ social and emotional development.



## IB Learner Profile

The aim of the Primary Years Programme (PYP) is to develop internationally minded people who, recognizing their common humanity and shared guardianship of the planet, help to create a better and more peaceful world.

Our school focuses on developing a series of attributes in the students that make up the PYP Student Profile.

The Stamford American Elementary School Curriculum is based on the American AERO Standards and it is taught within the framework of the International Baccalaureate (IB) Primary Years Program (PYP).

The AERO Standards guide our teaching content at Stamford American. They outline the essential skills and knowledge your child will acquire at each grade level, ensuring a well-rounded and age appropriate education.

These standards work in conjunction with our PYP approach to teaching and learning to best support your child's academic growth and development. The PYP is a globally recognized curriculum framework designed for children aged 3 to 12, fostering curiosity, creativity, and a love for learning through guided inquiry and concept-driven education.

## Approaches to Learning

These are cross-curricular skills integrated into every facet of learning, from explicit teaching and inquiry based learning in the homeroom and specialist lessons, to field studies, co-curricular activities, sports competitions, and artistic performances.

- Communication skills
- Research skills
- Thinking skills
- Social skills
- Self-management skills



## Bilingual Program: A Dynamic Dual-Language Experience

Our Elementary Bilingual Program (Grades 1–5) immerses students in a 50% Mandarin instruction model, integrating the language into Mathematics and Units of Inquiry (UOI) for deeper learning.

Through an innovative bilingual teacher-led approach, students transition effortlessly between languages while engaging in student-led inquiry and adaptive learning. With the support of bilingual teachers and teaching assistants, children thrive in a nurturing, inclusive environment, fostering a strong sense of belonging and a global perspective.

Our educators work together to ensure curriculum consistency and share best practices, enhancing the bilingual learning experience for every student.

## A Well-Rounded Learning Experience

Students spend a significant part of their day with homeroom teachers, building strong foundations in **language, mathematics, science, and social studies**.

Beyond core subjects, **specialist teachers inspire creativity and physical development** through music, visual arts, drama, physical education, and modern languages like Mandarin and Spanish. Library instruction further enhances literacy and research skills.

Learning extends beyond the classroom with **academic field studies** and engaging **after-school activities**, offering students exciting opportunities to explore, grow, and develop a lifelong passion for learning.

## Embracing the World of Information and Communication Technology (ICT)



Our mission is to equip students with the knowledge and responsibility they need to thrive as engaged citizens in a digital landscape.





# Middle School

(from Grade 6 to Grade 8)



Stamford American Middle School is committed to fostering both the academic growth and social-emotional well-being of students in grades 6 through 8. Through a nurturing environment, we empower students with personalized advisory programs and a dedicated leadership network that prioritizes student support, well-being, and compassionate care. Our holistic approach ensures every student feels valued, supported, and prepared for success.

Embrace the journey of mastering new skills.



## THINKING SKILLS

- Critical thinking
- Creativity
- Innovation transfer

## COMMUNICATIONS SKILLS

- Effective communication

## SOCIAL SKILLS

- Self-Management Skills
- Organization
- Affective skills
- Reflection

## RESEARCH SKILLS

- Information literacy
- Media literacy

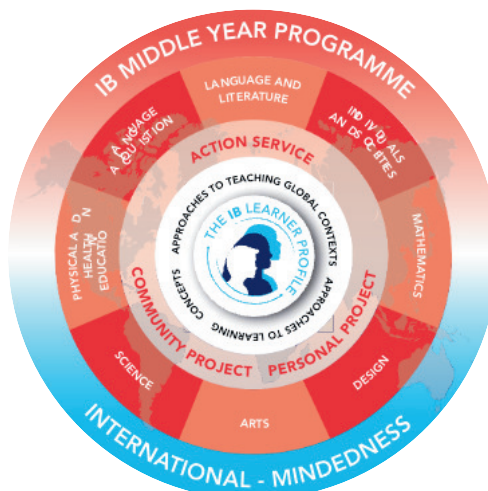
Discover the art of learning and the reasons that ignite your passion for knowledge.

At Stamford American Middle School, students are encouraged to apply their acquired knowledge and skills to address the pressing issues of our time. As part of an international school community, they engage with global challenges and diverse perspectives, both within the academic curriculum and through extracurricular activities.

Our educational framework is grounded in American Standards and aligned with the principles of the **International Baccalaureate Middle Years Program (IB MYP)**. Through inquiry-driven learning, students explore significant global themes, fostering intellectual curiosity and real-world problem-solving.

Students engage in a broad and balanced curriculum across the following eight subject groups:

- Language and Literature
  - English,
  - Mandarin,
  - Spanish,
  - Korean,
  - Japanese
- Mathematics
- Science
- Individuals and Societies
- Language Acquisition
  - English,
  - Mandarin,
  - Spanish,
  - Korean,
  - Japanese
- Arts
- Design
- Physical and Health Education



# High School

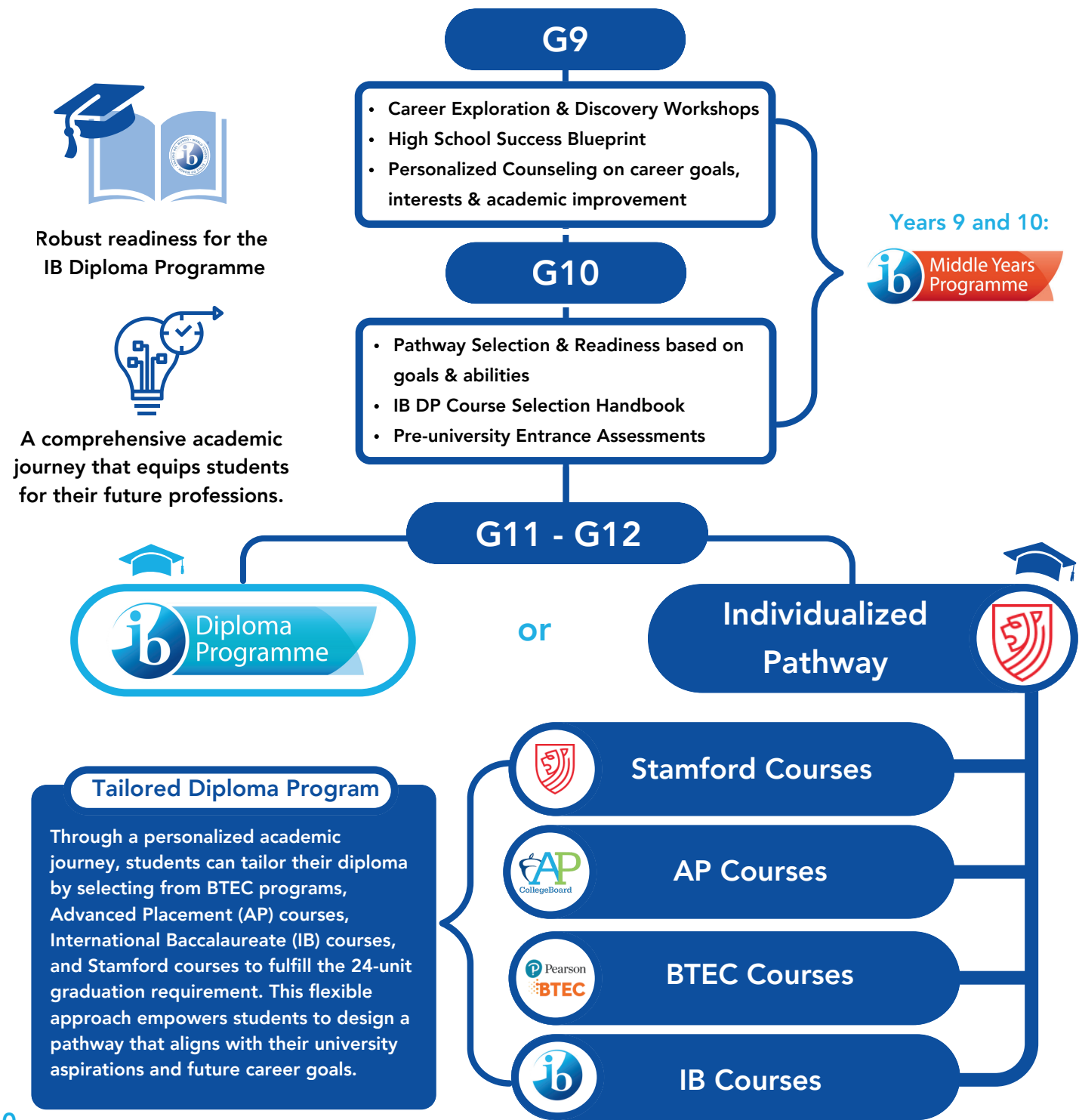
(from Grade 9 to Grade 12)

The high school program at Stamford American, designed for students in grades 9 through 12, offers an education that transcends traditional academics. As the only school in Singapore to provide a choice between IB DP (International Baccalaureate Diploma Programme), Advanced Placement (AP), BTEC, and Stamford Courses, we empower students to tailor their education to their strengths, aspirations, and future goals.

Beyond academics, our program fosters cultural awareness, intellectual growth, and vibrant social engagement, instilling a lifelong passion for learning. Graduates of Stamford American emerge as well-rounded, reflective, and globally conscious individuals, fully prepared for success in college, careers, and life.



## Personalized learning journey





# High School

(from Grade 9 to Grade 12)



## International Baccalaureate Diploma Program

Stamford American proudly presents the esteemed International Baccalaureate Diploma Programme (IB DP) for students in grades 11 and 12. This enriching two-year journey empowers international high school students to delve into three high-level and three standard-level subjects.

With over 20 diverse subjects to choose from, the IB DP equips students with the essential knowledge and skills for triumph at university and in their future endeavors. It stands as a globally acknowledged programme, drawing the attention of universities across the globe.



## The IB Diploma Program (DP) Structure

3 Courses  
ADVANCED LEVEL (HL)

3 Courses  
STANDARD LEVEL (SL)

THEORY OF KNOWLEDGE  
(TOK)

The Diploma Programme (DP) curriculum is made up of six subject groups and the DP core, comprising theory of knowledge (TOK), creativity, activity, service (CAS) and the extended essay.

Through the Diploma Programme (DP) core, students reflect on the nature of knowledge, complete independent research and undertake a project that often involves community service.

Each student selects at least three HL subjects and up to four, while the remaining subjects are taken at SL. They are also required to write an extended Essay and complete to the Creativity Action and Service (CAS).

Despite differences in depth, both levels are assessed using the same rigorous IB criteria.

### DP Core – Enriching the Learning Journey

The DP Core includes three essential components designed to deepen students' understanding, encourage critical thinking, and inspire meaningful application of knowledge and skills.

## IBDP Courses Available

### Language & Literature

- English B HL
- English A – Language and Literature SL/HL
- English A – Literature SL/HL
- Language A: Self-Taught Literature SL
- Mandarin A: Language and Literature SL/HL
- Spanish A: Language and Literature SL/HL

### Sciences

- Biology SL/HL
- Chemistry SL/HL
- Physics SL/HL
- Design Technology SL/HL
- Mathematics: Analysis and Approaches SL/HL
- Mathematics: Applications and Interpretation SL/HL

### Individuals & Societies

- History – 20th Century World and History of Asia SL/HL
- Economics SL/HL
- Business and Management SL/HL
- Psychology SL/HL

### Language Acquisition

- Mandarin Ab Initio
- Spanish Ab Initio

### The Arts

- Theater SL/HL
- Visual Arts SL/HL
- Music SL/HL

# High School

(from Grade 9 to Grade 12)



## Stamford American Individualized Pathway

(11th-12th grade)

At Stamford American, we offer a truly individualized academic pathway, allowing students to design a curriculum that aligns with their strengths, interests, and aspirations. Our curriculum team—a dynamic collaboration of IBDP, AP, and BTEC program coordinators, alongside our Executive Directors of Teaching and Learning—works closely with skilled educators to craft a flexible, student-centered curriculum that spans all departments and truly allow them to create their own future.

This unparalleled flexibility ensures that each student's educational journey is as personalized, rigorous, and globally relevant as they aspire it to be.



## Advanced Placement Courses

Stamford American offers over 20 AP courses for grades 10-12, providing a rigorous, university-level academic experience in high school.

Recognized as A-level equivalents in the UK, Australia, and beyond, AP courses challenge students with university-level rigor while preparing them for higher education.

- English Literature and Composition
- Chinese Language and Culture
- Spanish Language and Culture
- World History
- United States History
- United States Government and Politics
- Comparative Government and Politics
- Macroeconomics / Microeconomics
- Psychology
- Human Geography
- Environmental Science
- Biology
- Physics 1
- Physics C
- Statistics
- Calculus AB / BC
- Computer Science Principles
- Pre-Calculus



## BTEC

Stamford American proudly offers the BTEC International Level 3 program for Years 11 and 12, providing students with practical skills and real-world knowledge to excel in further education and careers.

Recognized globally and valued by universities, BTEC focuses on skills-based learning through engaging thematic units and real-world assessments, moving beyond traditional exams.

- Music
- Art & Design
- Drama & Acting



## Stamford Courses

Stamford American offers high school-level courses designed and developed internally by our academic team. These courses provide a flexible and student-centered approach, allowing for adaptability to students' interests and learning styles. Unlike externally governed programs, Stamford courses are internally assessed, focusing on project-based learning rather than standardized exams.

This one-year program meets the graduation requirements of American high schools and helps students balance their academic workload, complementing externally assessed courses while ensuring a well-rounded and engaging educational experience.

- Global Perspectives Contemporary
- Art Foundation
- Spanish Diploma as a Foreign Language
- Real World Science
- Consumer Math
- Advanced Algebra and Geometry
- Public Speaking



# High School

(from Grade 9 to Grade 12)



STAM



## Academic and College Counseling

Stamford American's university Counselling Program turns the university application process into a thrilling adventure of self-discovery, guiding students to uncover the future career path and personal development that resonate with their true selves.

## Support for a future beyond Stamford American

There is a great deal of uncertainty and confusion surrounding university admissions, particularly to the most selective institutions. Our university Counselling program offers support for both students and parents as they make the transition, providing the information and guidance they need for a successful and positive university application.

That means identifying and applying to university where they will be intellectually challenged and socially engaged; schools which will encourage and inspire them as global learners, thinkers, and citizens.



**Stamford High School Graduation Achievement**



**Stamford High School Diploma with Advanced Placement Course**



**Stamford High School Diploma and International Baccalaureate Diploma**



**Stamford High School Graduate + BTEC Certification**

## 2024-2025 ACADEMIC ACHIEVEMENTS

### IBDP AVERAGE ACHIEVEMENT

**SAIS 34.6 points**

**Global 30.24 points**

### AP SUCCESS RATE (3/5 OR HIGHER)

**77%**

**SAIS**

**60%**

**Worldwide**

**95%**

**accepted to their first choice**





## Language Acquisition Program

Our language programs empower learners of all abilities to cultivate robust language skills and attain remarkable academic achievements. Discover more about our programs that will enrich your child's educational experience.

### English Acquisition Programs



### Bilingual Program (Elementary School) & Daily Foreign Language



#### THE STAMFORD AMERICAN LANGUAGE ACQUISITION APPROACH



RECOGNIZE THE UNIQUE  
STRENGTHS OF EACH STUDENT AS  
THEY CULTIVATE THEIR LANGUAGE  
AND READING/WRITING ABILITIES.



INTEGRATING LANGUAGE AND  
CONTENT IN HARMONY



UNITY AMONG STAKEHOLDERS TO  
DISCOVER THE MOST FITTING  
LEADERSHIP STRATEGY.





# English Acquisition Programs

We recognize English language acquisition as a cornerstone of academic success. Our innovative approach provides four distinct English support programs, ensuring that student with different proficiency level receives the guidance they need to thrive.

## English Assessment and Level Identification

For student applying from KG2 to Grade 5



For student applying from Grade 6 to G10



## Comprehensive English Support

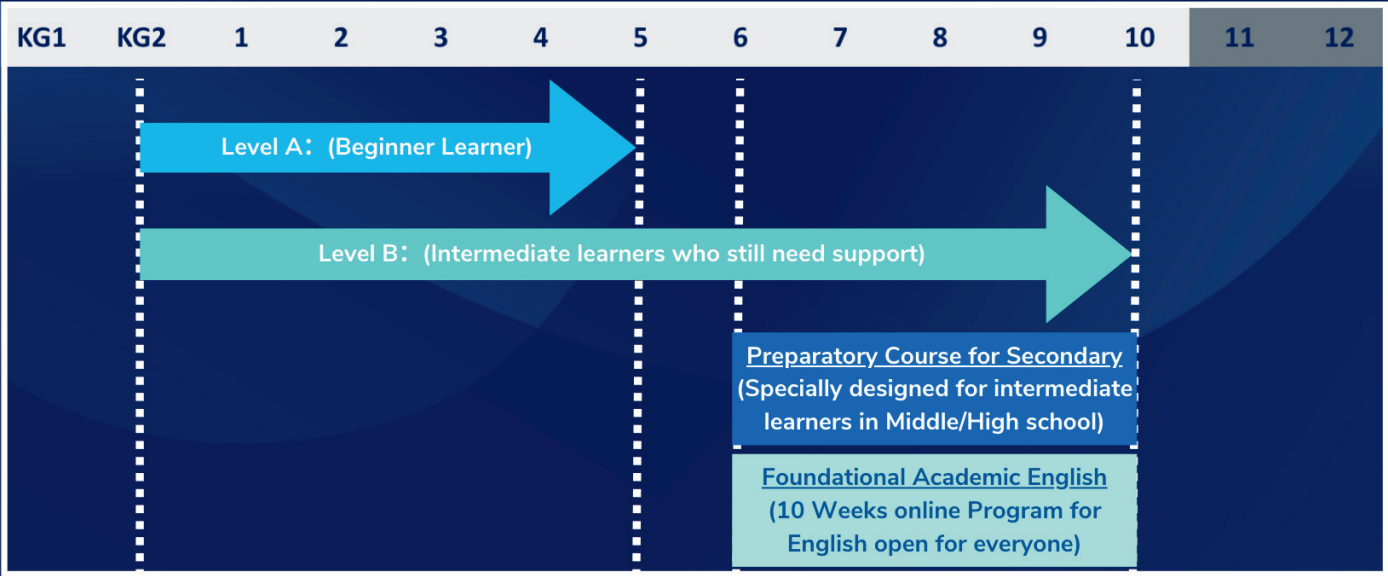
At Stamford American International School (SAIS), our English as an Additional Language (EAL) programs provide integrated classroom support and 80 minutes of daily English instruction, ensuring all students thrive.

### Two-Levels EAL Approach

- **Level A (Beginner to Intermediate)** – Dedicated 80-minute daily instruction with an EAL co-teacher, strengthening foundational English skills.
- **Level B (Intermediate to Advanced)** – Students receive embedded classroom support, with co-teachers collaborating alongside homeroom teachers.

### Specialized English Programs

- **PCS (Preparatory Course for Secondary)** – A 20-weeks program aligned with the MYP curriculum, ensuring a seamless transition to mainstream classes.
- **FAE (Foundational Academic English)** – A 10-week online program equipping students with essential academic English, culminating in a SLATE test to track progress.





## PCS - Preparatory Course for Secondary (6th to 10th grade)

At Stamford American we proudly embrace diversity, and imagine a world where every child has an equal chance to learn and thrive. PCS is a unique program for students with emergent academic English and prepares highly motivated students from Grade 6 to 10 for the rigours of scholastic life at Stamford American and beyond.

Through an intensive 20-weeks program students will learn to fully engage with an IB-style curriculum covering Language Acquisition, Math, Science, English Language & Literature, and Humanities, while improving their fundamental English skills in reading, writing, listening, and speaking.

- **Language and Academic Growth:** Empower students to enhance their academic language abilities.
- **Wellbeing:** Foster the emotional and social flourishing of students.
- **Global Essence:** Cultivate an appreciation for multiculturalism and global education.



Math



Study Skills



Science



Interdisciplinary Learning



Literature



Language Acquisition



Humanities



## F AE

### Foundational Academic English Program



**Adaptable Admissions and Timeline**  
10-20 week program commencement:  
January, March and August Intake



**Collaborative group learning in harmony**



**Upon completion, conduct the SLATE assessment.**

### F AE Programs

*Personalized mentorship from the educator:*

- Attend online guided classes by teacher 3 times a week.
- Access learning anytime, anywhere, with flexible exploration of content and resources.
- Seamlessly integrate with existing school schedules for a personalized learning experience.
- Assess understanding through interactive quizzes and immersive video content.
- Gain deeper insights through direct engagement with expert educators.
- Collaborate and grow alongside peers in a dynamic learning community.





# Mother-Tongue & Languages

At Stamford American International School, our Mother Tongue Program offers students a unique opportunity to maintain and strengthen their native language in a fun, engaging, and supportive environment. Offered as a voluntary CCA, this program goes beyond language learning—it’s a chance for students to connect with their cultural roots, enhance cognitive skills, and build multilingual confidence.

By embracing their mother tongue, students not only preserve their identity but also gain a competitive edge in a globalized world. Join us in celebrating language, culture, and connection!



Through interactive activities, peer collaboration, and expert guidance, students will:

- Develop fluency and confidence in their native language
- Deepen cultural understanding and appreciation
- Enhance cognitive flexibility through multilingual exposure
- Engage in a supportive community of peers who share the same linguistic background





# Holistic Education

## Field Studies

Our Field Studies strive to provide a holistic education that prepares our students to become leaders who are not only academically proficient but also ecologically literate, compassionate and engaged global citizens. This vision is reflected in our Field Studies Program, which aims to provide a model of holistic, field-based experiential learning.



### Outdoor Skills & Knowledge

Live and travel comfortably in the outdoors, and to be resilient in the face of challenge and adverse condition.



### Leadership & Collaboration

Use metacognitive skills to be self aware and regulate their choices in order to more fully contribute to their own and their group success.



### Health & Wellbeing

Be able to engage with the outdoors without the distraction of technology as a means to restore their attention and well being.



### Ecological Literacy, Conservation & Sustainability

Gaining an understanding of ecological concepts and the necessity of conservation and sustainability.



## CCA: Co-Curricular Activities

Stamford American School presents a co-curricular (CCA) program that empowers students to cultivate independence and creativity, enabling them to delve into their own passions and embark on their unique learning journey.

We have an exciting array of over [350 activities](#) designed for students from Pre-K to 12th grade, featuring engaging options like mock investing, calligraphy, Model United Nations, and aerospace.



Minecraft



Model United Nation



Evolve Art



Basketball



Investment



Calligraphy



Coding



Digital Movie Making



Stamford Cheer Squad



Crafting Fun



Karate



Ballet



Science Exploration



Rock Climbing

+350  
CCAs



Golf Academy and Simulator



4 Swimming pools



2 Rooftop tennis courts



1 Rock Climbing Wall



# Art and Music

400

Students  
enrolled in our  
Music Programs

20

Music  
Scholarship  
awarded

+12

Music  
Instruments  
taught

5

Concerts hold  
annually

## Music Instruction

Music is an integral part of student life at Stamford American, with a passion for music evident throughout the campus.

- At the **Early Learning Village (ELV)**, children as young as 18 months begin exploring music and movement. By age 3, they have the opportunity to join the Suzuki Inspired Violin & Cello Program, learning violin through the internationally under expert instruction.
- From **Grade 1 to Grade 7**, music is a mandatory subject in the curriculum.
- In **Grades 8, 9, and 10**, it becomes an elective within the Middle Years Program (MYP) Arts.
- For **Grades 11 and 12**, students who wish to continue their musical education as part of their high school diploma or advanced studies can choose from specialized programs, including BTEC International Level 3 in Music and IBDP Music.

## Art and Design

### KG1- Grade 5

- Objective: Creativity and self-discovery
- Approach: Hands-on art projects
- Skills: Basic art skills, various techniques of art making

### Grades 6 -10

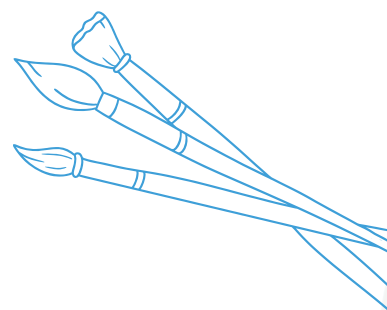
- Objectives: Planning, producing and exhibiting artworks.
- Approach: Seeking new ideas, critical thinking
- Skills: A variety of media, technical and conceptual training

### Grades 11 - 12

- Programme:
  - IB Diploma Programme (IBDP),
  - BTEC Art & Design,
  - Stamford Art Foundation Course
- Results: Building an art portfolio for university applications



Student Art work





# The Art of Acting and Performance



The Reagan Theater, with its capacity of 500 seats



Stamford American provides a wealth of opportunities for students eager to embrace their passions as actors, directors, writers, and producers, allowing them to explore their talents on the stage. Students enchant the Stamford community with eight magnificent stage productions each year. Drama students are granted the chance to fully express their creative passion and talents in the magnificent Reagan Theatre, a true marvel of modern design.

Theater stands as one of the most exceptional avenues for cultivating the essential skills required for future triumph.



Theater goes beyond understanding and portraying diverse characters—it fosters collaboration, adaptability, and resilience. By stepping into different roles and navigating various situations, students develop essential skills that extend far beyond the stage, enriching their personal and professional lives across multiple fields.



Presentation Skills



Leadership Skills



Communication Skills



Creativity





# Innovation Center

## Makerspace for Innovative Learning

Our dynamic Innovation Center and newly designed Makerspace offer unparalleled opportunities for learners of all ages to create, experiment, and innovate. At Stamford American, students bring their ideas to life in a vibrant, hands-on environment dedicated to exploration, discovery, and creativity, fostering a community of empowered thinkers and problem-solvers.



Virtual Reality (VR) kits



3D printers



Robotics



Innovation Center



Makerspace



iPad



MacBook



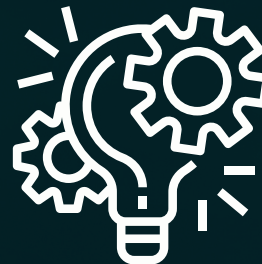
Genius Bar

## A Dynamic Hub of Innovation and Discovery

More than just a space—this is a thriving hub of knowledge, creativity, and collaboration, where ideas come to life and innovation knows no bounds.

### Immersive Experiences:

- Revolutionizing math through innovation
- Engineering circuits that power the future
- Driving meaningful conversations in the digital world
- Pioneering AI projects that shape tomorrow
- Cutting-edge video creation that brings imagination to reality



### Unmatched Support & Guidance:

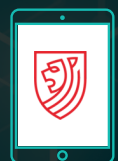
With dedicated educators and digital learning experts, students receive tailored mentorship, real-time feedback, and hands-on guidance, ensuring they maximize their potential in an environment that champions creativity, problem-solving, and future-focused learning.

Here, imagination meets impact, and students become the architects of innovation.

## Digital Learning Objectives

Stamford American's digital learning transcends the mere use of digital devices; it embraces the essence of the digital age. This journey involves grasping the possibilities and necessities of today's and tomorrow's digital landscape. Beyond the application of technology, you will explore the mindsets and interactions that are shaped by the digital transformation of our society.

- **Goal:** Inspire students to explore, innovate, and unlock their creative potential.
- **Projects:** Robotics challenges, fashion design innovation, DIY gaming arcade.
- **Results:** Turning ideas into reality, understanding their impact, and embracing the creative journey.



# PTA and Stamford Community

The Stamford American Parent-Teacher Association (PTA) is at the heart of our vibrant and diverse school community. Whether you are looking to stay active, connect with like-minded individuals, or contribute to the school, the PTA offers numerous opportunities to get involved.

Join us in fostering an engaging and supportive network through a variety of health, fitness, social, and community-driven initiatives.



## PTA Activities



### • Health & Fitness

- Stamford Hikers – Weekly hikes for parents & guardians.
- Get Fit - SAIS – Swimming, Dance, HIIT and more!
- SAIS Yoga – Relaxing yoga sessions with Alyona & Anna.
- Run-Walk-Fit – Weekly running/walking group.



### • Social Activities

- Stamford Lunchbunch – Weekly social lunches.
- Stamford City Walks – Explore Singapore.
- Happy Hour - Stamford Socials – Monthly social evenings.
- Stamford Foodies – Culinary adventures.



### • Community & Volunteering

- Library Volunteers – Help out in the school library.
- Lion's Den Volunteers – Support the school store.
- Eco @ Stamford – Sustainability and green initiatives.



# Admissions

## Our Campuses

- **Woodleigh Campus**
  - Elementary to High School (6 to 18 years old)
  - Location: 1 Woodleigh Lane, Singapore 357684
- **Early Learning Village**
  - Pre-Nursery to KG2 (18 months old to 6 years old)
  - 3 Chuan Lane, Gate 4, Singapore 554350



## Accessibility

- **MRT North East Line**
  - Woodleigh Station (1 min from School Gates)
  - Take Exit B, proceed straight ahead, and make a right turn onto Woodleigh Lane.

### • Bus Lines

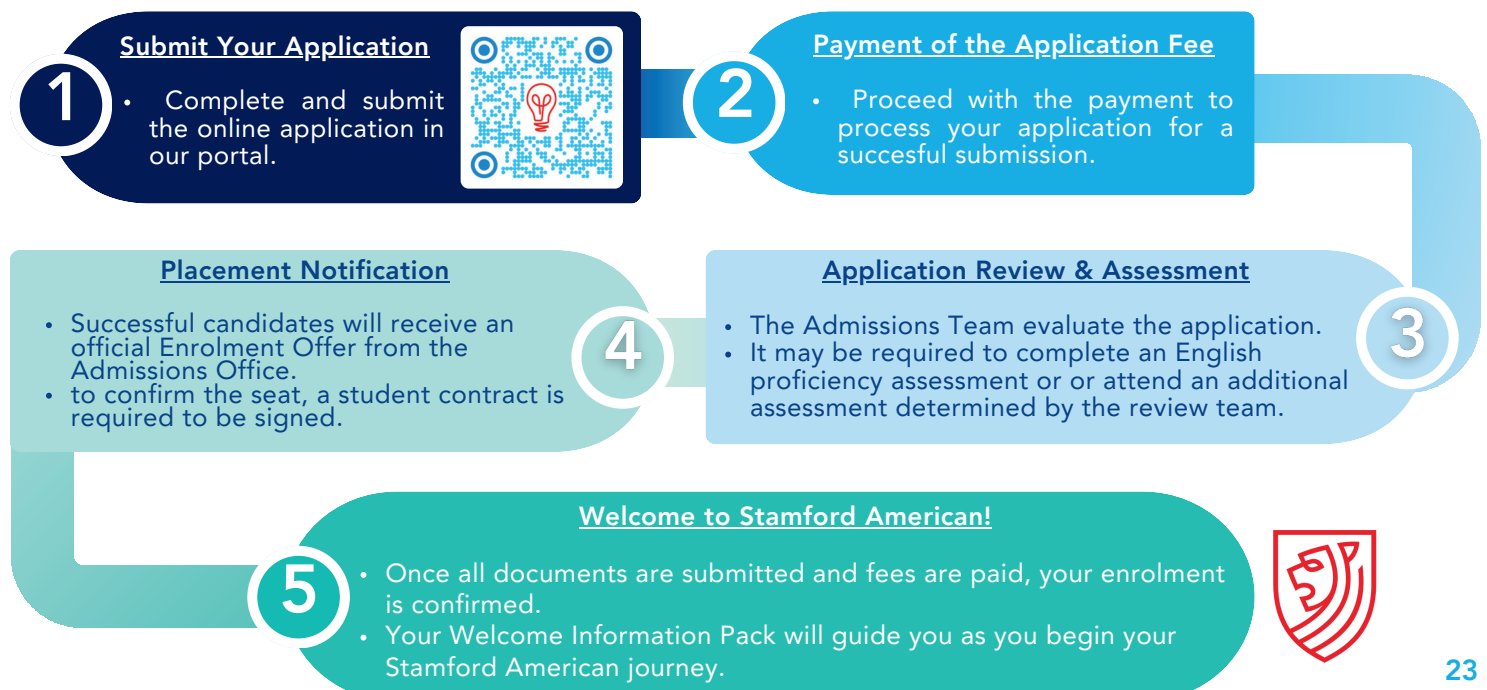


## Shuttle Service

Woodlands Transport Service Pte Ltd (WTS) is the official transport provider for Stamford American International School. As Singapore's largest private bus operator, WTS ensures high-quality, reliable transportation with real-time tracking through its Intelligent Bus System.

- **Woodleigh Campus:** Daily school transport and a paid CCA afternoon bus service for major Co-Curricular Activities.
- **Early Learning Village (ELV):** Door-to-door transport for students aged 2 and above, plus a paid CCA afternoon bus service.
- **ELV Student Transfer Service:** A free shuttle for ELV students with siblings at Woodleigh, with designated drop-off and pick-up points.

## Admissions Process





## Stamford American INTERNATIONAL SCHOOL

Inquiry & Tour Booking



COGNITA

Stamford American International School SSG Registration Number: 200823594D  
Registration Period: August 9, 2022 - August 8, 2026

Phone: +65 6653 2949  
Email: [admissions@sais.edu.sg](mailto:admissions@sais.edu.sg)  
Website: [www.sais.edu.sg](http://www.sais.edu.sg)