



Stamford American
INTERNATIONAL SCHOOL



PREPARATORY COURSE FOR SECONDARY SCHOOL

A Foundation For The Rigors Of Secondary School Education

WELCOME FROM THE PRINCIPAL



Hello and welcome! My name is Mr. Ave Womack and I am the Principal of the Preparatory Course for Secondary or as we call it - PCS. This is my 4th year at Stamford and first year as PCS Principal. Prior to having this wonderful opportunity of working with this amazing group of teachers, I spent the first three years as the High School Deputy Principal in the High School here at Stamford American International School. Prior to Stamford, I served in a private/independent school in my hometown of Los Angeles, CA - home of the magnificent Los Angeles Lakers. Go LAKERS!!!

Before this post, I worked in an international school in Shanghai, China for seven years. Let me take some time to describe to you a typical PCS student. PCS students are full of confidence, studious, and want to make a positive impact in the world. Additionally, PCS students embody the IB Learner Profile and strive to be reflective, open-minded, risk-takers, caring, balanced, principled, knowledgeable, inquirers, communicators, and thinkers. Furthermore, PCS students embody our school values of integrity, courage, ingenuity, and compassion, have a firm grasp of the IB MYP curriculum, keen understanding of international mindedness, and general curiosity about the world.

Our PCS Teachers are not only well versed and masters of their subject area, but also their level of care for students is unrivaled. In PCS and Stamford, the academic program is intertwined with the social and emotional learning program, which means that we prioritise the well-being of all students. I always say "Happy Students like to study"!

As we look at the Stamford Vision, "Inspiring students to create their unique future", this is the foundation, throughline, and goal for PCS and the school. We wholeheartedly believe that students can achieve anything that they set their minds to. This is where the partnership between the school and parents is vitally important. We look forward to having parents support the program from home and encourage their child or children to do their best. Our holistic approach allows students to tap into their innate abilities and develop the courage to try new things. Students in PCS look forward to the challenge and understand that they can achieve their goals if they put their mind to it.

In PCS, we offer three programs - namely our face-to-face program on our Woodleigh campus in Singapore, E-Learning program (for Grades 8 - 10) which offers the same curriculum and experience as our face-to-face program, and our Foundational Academic English program that is offered online to support English Language Learners in Grades 8 & 9 that would like to build their English Language Acquisition skills through asynchronous core subject modules with an option to connect weekly with a PCS teacher.

I am personally super excited about all three programs which are aimed to support English Language Acquisition in a creative and meaningful way. PCS is a great place to be and makes learning English super fun! Our homeroom environment nurtures students' well-being and inspires them to be their authentic selves.

I look forward to seeing you in person or online. Go Lions!

Watch Ave's
personal welcome



Ave Womack

Preparatory Course for Secondary School Principal

Home to over 75 nationalities and a leading international school in Singapore, Stamford American International School provides the best start in life for children aged 2 months to 18 years. We believe that there is an opportunity for every child, no matter where their passion lies. Inspiring students to create their unique future, we take a personalized approach in a caring, supportive and inclusive academic environment.

Discover our
amazing facilities



SUPPORT FOR THOSE WITH THE DRIVE TO SUCCEED

At Stamford American we proudly embrace diversity, and imagine a world where every child has an equal chance to learn and thrive. This thinking underpins our new cutting-edge Preparatory Course for Secondary School (PCS).

A unique program for students with limited academic English, PCS prepares highly motivated students from Grade 6 to 10 for the rigors of scholastic life at Stamford American and beyond.

Through an intensive 20-week program students will learn to fully engage with an IB-style curriculum covering Math, Science, Literature, and Humanities, while improving their fundamental English skills in reading, writing, listening, and speaking.

Unique features of the program

- Multi-nationality
- Inquiry-based learning
- IB-style education model
- Personalized education plans
- Highly skilled and experienced instructors
- Cutting-edge language acquisition teaching methods
- Designed in collaboration with UCL Institute of Education
- Stamford American aligned curricula in Math, Science, Literature and Humanities
- Curriculum is taught at two levels of English ability: Foundational and Intermediate
- Supported by an array of online English language acquisition resources
- Full use of Stamford American facilities and resources
- 7 hours of instruction per day, 5 days a week
- Social, emotional and academic check in
- PE, Drama and additional English literacy training

THE SAME STAMFORD AMERICAN CURRICULUM, WITH AN EMPHASIS ON ENGLISH PROFICIENCY

Designed in collaboration with UCL Institute of Education, no other program in Singapore offers the range of content-rich courses, helping students eager to make the most of their formative education realize their scholarly and linguistic potential.

Our highly skilled PCS faculty are at the forefront of English language acquisition pedagogy. Moreover, the PCS curriculum uses the same framework as the mainstream Stamford American Middle Years Program (MYP).

While instruction is modified to meet the needs of students at varying stages of English language acquisition, the content of each lesson remains at the same high standard found in mainstream classes. In practice this means that our classes are inquiry based and project driven, and importantly, an MYP score in PCS is the same as an MYP score in the mainstream.

“What I like about PCS is that I have met new people from other places like China, Korea, Italy and Denmark. PCS is a good program to help me to improve my English level and to get to the Mainstream.”

- Nicole from Spain

PCS curriculum at-a-glance



Math



Study Skills



Science



Personalized Projects



Literature



EAL -
Intermediate/
Foundational



Humanities



A HOLISTIC APPROACH FOR INDIVIDUAL SUCCESS

The first semester commences July and consists of 20 consecutive weeks, with breaks following Stamford American school holidays, national holidays and Thanksgiving.

Students receive daily individualized feedback in the form of classroom projects, homework, quizzes, and tests in order to accurately monitor progress. A variety of online tools are also utilized, designed to effectively track improvements in the key skills of English reading, writing, listening, and speaking.

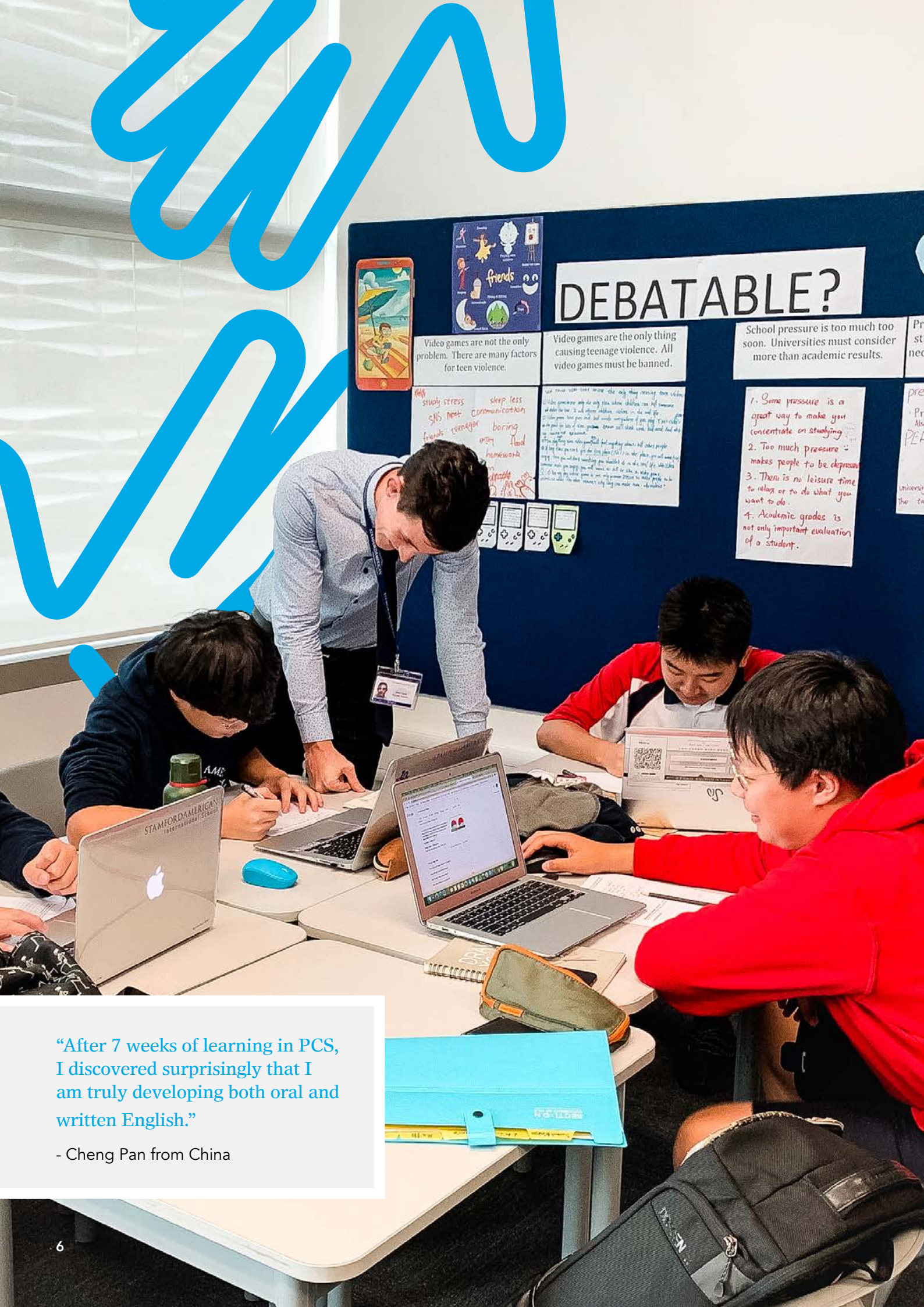
Personalized support is also found in our PCS Advisory, encompassing holistic daily pastoral care and social, emotional, and academic check-in. In addition, our PCS Counsellor will provide regular check-in for the students.

ENGAGEMENT WITH THE WIDER STAMFORD AMERICAN SCHOOL COMMUNITY

Most importantly, every student is given the opportunity to engage with the broader Stamford American school community. This includes involvement in co-curricular activities (CCAs), drama productions, Stamford student council, music and athletics as part of the program requirement.

“I came from Korea, and I was not used to using English but it changed when I came here. The main strength of this program is group work. Group work has made me speak more in class instead of the teacher explaining everything”

- Sean from South Korea



“After 7 weeks of learning in PCS, I discovered surprisingly that I am truly developing both oral and written English.”

- Cheng Pan from China

MEET THE PCS FACULTY



Ms. Natasha Stacey

PCS Literature and Humanities Teacher

Teaching for me is more than just content, it is about positively guiding and supporting children to reach their full potential. I feel that PCS provides students with a holistic approach to learning, we care about their academic success but we also care about the young adults they are becoming. We work as a team, to support and encourage our students to reach their full potential and to have strong values. In PCS, students walk into our classrooms from many different countries, but they leave with lifelong friendships, lifelong educators that care about them and the academic language needed for the mainstream and beyond.

Originally come from Australia, I have lived in many different countries, mostly recently Taiwan and now Singapore for one year. I love to meet new people, explore different countries, cook, read, do yoga and play the piano.



Mr. Anthony Mauldin

PCS Mathematics and Science

What I enjoy most about PCS are the students that come through our program. As a group; teachers, principal and students alike, we rally together in a family style community in order to reach the common goal of improving each student's English and learning what it means to actively participate in a community. Students are asked to take on feedback in which they think past what they ever believed was possible in themselves and set up long term goals for success. We are teaching more than just Math and Science in PCS, focusing on life skills that will help our students find success in a myriad of different situations. The life and energy that is seen inside the classroom is what makes PCS so incredible and worthy of our all-in mentality.

I am originally from Mesa, Arizona, USA and my passions outside of school revolve around the outdoors and travel. I love getting to hike, rock climb, scuba dive, and especially love to fish. In a world that emphasizes the importance of yourself, I enjoy getting to perspectives where I can feel small, lost in awe and wonder.



Mr. Marc Ferris

PCS EAL Teacher

I absolutely love the family environment found at PCS, and working within a tight knit community. Our PCS students are at the center of our methods and pedagogical approaches which we uphold.

I am from Scotland, UK originally and besides teaching I love to visit and explore new cultures, countries and societies. Sports is my other passion - soccer, jiu-jitsu and golf are my key interests - but I'm not afraid to give everything a try. I feel like my experience of travel and trying out various different sports helps me to relate to my students, in various manners. I can ensure they are comfortable trying out new methods and I have a good grasp of their expectations and where they are coming from. It helps them to settle and feel at home much quicker this way.



ADMISSION & GRADUATION

PCS ENTRANCE REQUIREMENTS

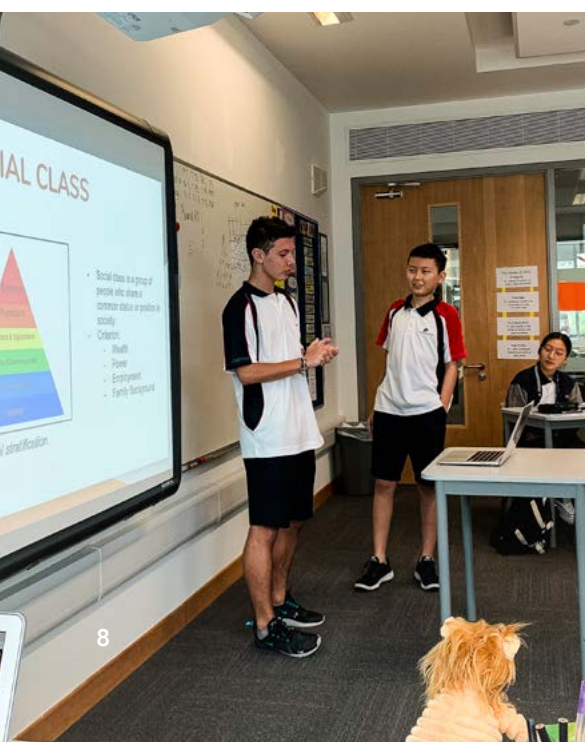
Applicants interested in joining the PCS program first need to demonstrate English proficiency by meeting the grade-level SLATE test score entry criteria (see table). After testing, applicants will meet with the PCS faculty to gauge an applicant's standard of conversational English and overall fitness for the program. Successful applicants must also have a strong academic record, and extra-curricular interests and leadership experience are highly valued.

The entry criteria to be admitted to the program are as follows:

GRADE	SLATE ENGLISH PROFICIENCY TEST SCORE REQUIRED (RANGE BETWEEN):
6th graders	1.5 to 2.9
7th graders	1.5 to 2.9
8th graders	1.5 to 3.4
9th graders	2.5 to 3.9
10th graders	3.5 to 4.4

Interview by the school office is also required for PCS applications and is the determining factor for accepting students into PCS.

The outcome of the SLATE test score will place successfully admitted students in one of two English levels: Foundation or Intermediate. The SLATE is then administered two more times during each semester, in October/March and again in December/May. The end of semester SLATE assessment is a major factor in determining if the student has met the standard of the course for graduation.



GRADUATION FROM PCS

In order to graduate from PCS, each student must meet the necessary criteria according to the grade level (see table).

The exit criteria to graduate and be admitted to Stamford American mainstream:

GRADE	MYP SCORE REQUIRED FOR EACH CLASS (MINIMUM)	SLATE ENGLISH PROFICIENCY TEST SCORE REQUIRED (MINIMUM)
6th graders	4.0	3.0
7th graders	4.0	3.0
8th graders	4.0	3.5
9th graders	4.0	4.0
10th graders	4.0	4.5

In addition, all students must demonstrate strong classroom performance on graded material, and receive teacher recommendations in order to transfer to mainstream.

After completing the course and successfully meeting the exit criteria, students will be welcome to join Stamford American mainstream courses.

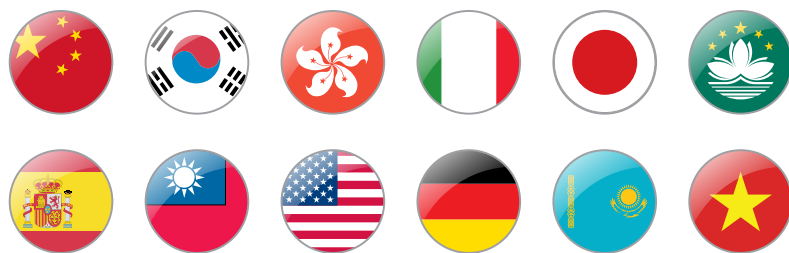
Note: In the event that a student does not fulfil the course graduation requirements within their first semester they are permitted to study in the program for one more semester, for a maximum of two semesters.





MEET THE PCS FAMILY

Student Nationalities:

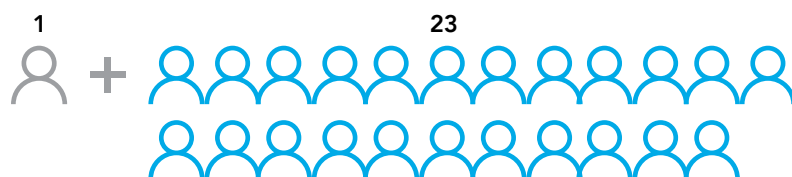


Teacher/student ratio:

Advisories



Classes



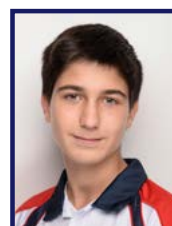
STRUCTURED SUPPORT BEYOND THE CLASSROOM

The Homework Club has been designed to help structure student's days in such a way where they are able to achieve a much healthier school-life balance. It is a time for students to come together after school and complete their assignment and ask questions of their teachers. This sets up our students to be able to leave school with the vast majority of their homework completed, giving them a time to rest, relax, and engage in physical activity when they get home.

Hear first-hand from our students



Emily
from China



Alessandro
from Italy



FEES (FOR 2022/23, INCLUSIVE OF GST)

Application Fee:	S\$800 per enrollment (one-time, non-refundable)
Enrolment Fee:	S\$3,461 (one-time, non-refundable)
Facility Fee:	S\$6,942 (one-time, non-refundable)
Technology Fee:	S\$1,070 per annum
Tuition Fee:	S\$28,795 per semester

ACCREDITATION & CPE DETAILS

A certificate upon completion of the Preparatory Course for Secondary School is awarded by Stamford American International School Pte Ltd, a CPE approved private education institution. The CPE details are - CPE Registration number: 200823594D. Period of Registration: August 10, 2018 to August 9, 2022

REALIZE THE ADDITIONAL BENEFITS OF BOARDING AT STAMFORD AMERICAN

The boarding program at Stamford American gives PCS students the academic, social, and emotional support they need for success. The dedicated staff of boarding professionals, employed by SAIS, have continuous contact with the PCS academic team. This enables them to effectively guide each student's studies whilst in the boarding house. Weeknights, there is an organized study hall that is overseen by the Director of Boarding. Additionally, PCS students have a structured study hall each Saturday morning.

Benefits of being a PCS Boarding Student

- Continued language instruction after school
- Structured study time, curfew, device access control
- Bonding with fellow PCS students / Stamford American mainstream students
- Safe environment with boarding teachers employed by SAIS
- Pastoral Care – weekend activities, medical care, meals catering

Learn more about
boarding with
Stamford American





Stamford American INTERNATIONAL SCHOOL

1 Woodleigh Lane
(Off Upper Serangoon Road),
Singapore 357684

T: +65 6653 7907
E: admissions@sais.edu.sg
W: www.sais.edu.sg/pcs



COGNITA

Stamford American International School CPE Registration Number: 200823594D
Period of registration: August 9, 2022 to August 8, 2026

