



Stamford American
INTERNATIONAL SCHOOL



PATHWAYS FOR ENGLISH LANGUAGE LEARNERS

FOR KG2 - GRADE 10

The Stamford American **English as an Additional Language** (EAL) program offers a unique environment that sees students integrated into the mainstream classroom and supported by dedicated EAL experts. English language support continues until students can meaningfully and independently participate across all subjects, in English.

EAL is available to all students from KG2 to Grade 10 looking to gain confidence in their English language ability.



WELCOME FROM THE PROGRAM DIRECTOR

Dear Families,

Thank you for your interest in our English language support at Stamford American International School. We are a diverse community represented by over 75 different countries. Our multicultural and multilingual community is one of our biggest strengths and we are proud to welcome students and their families for whom English is not their first or strongest language.

The mission of the English as an Additional (EAL) program is to advance the academic language development and academic achievement of English language learners, so that these students can successfully access the school curriculum in English. Students will be able to experience positive achievement across the subject areas which, we hope, will inspire them to create their unique future.

Our objective is to develop the EAL students communicative competence in English to a level that will allow them to function on a peer group level academically, socially and culturally. We strive to provide each EAL student with appropriate services based upon their unique needs. By learning English as an additional language students have the opportunity to deepen their knowledge and understanding of their world.

Stamford's EAL program enables students to become critical and competent communicators in all aspects of their lives. The EAL faculty are not only teachers, we are also advocates for our English language learners. We work closely with students to ensure that they learn how to express themselves, so that their voice can be heard in our diverse and vibrant community.

I have had the privilege to work with and learn from the Stamford community over the past 8+ years but I have also been fortunate to be a part of our parent community and the mother of two Stamford Lions. We are a proud Stamford family and hope to welcome you and your family to our community!

Warm Regards,

Rena Brown

Director of English as an Additional Language

"When children learn language, they are not simply engaging in one kind of learning among many, rather they are learning the foundation of learning itself." (Michael Halliday, 1993)



Watch **Rena's**
personal welcome

Why Choose Stamford American's EAL Program?



Tailored to suit different competency levels, so students can progress at their own pace



Dedicated EAL teachers work closely with Homeroom and Subject teachers to ensure students get the ultimate support in their progress towards independence



Integrated with mainstream classes, ensuring language learners thrive in the English rich environment

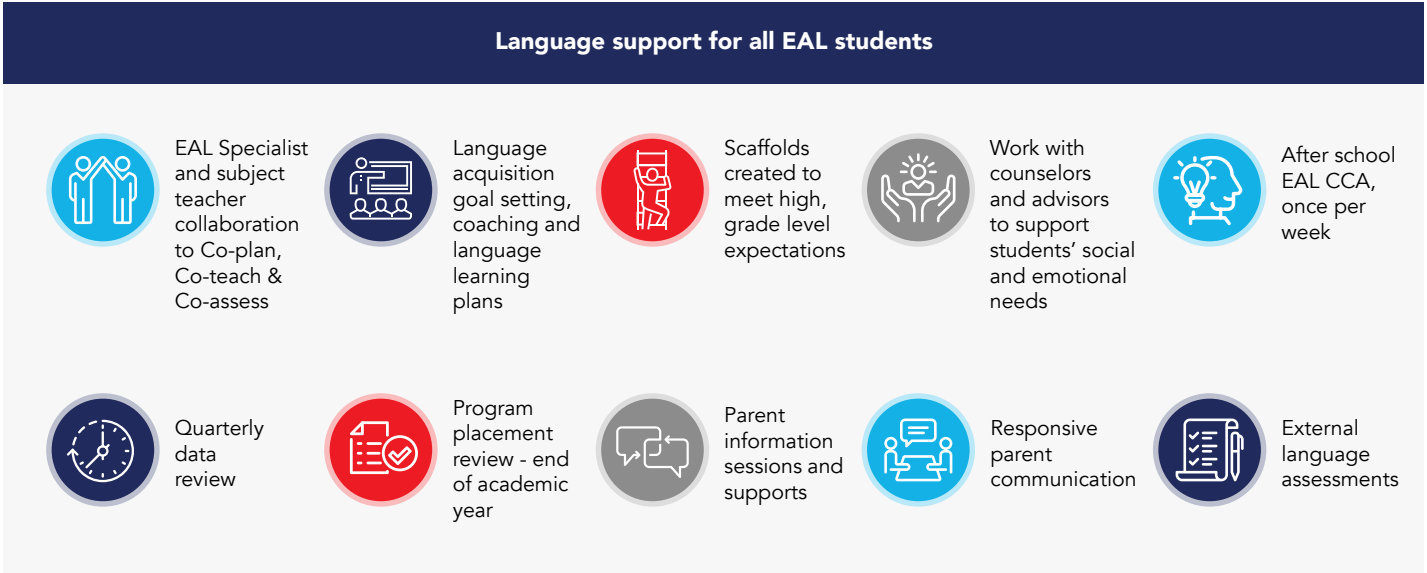


As English language learners progress towards independence they are supported with many strategies such as purposeful grouping and cooperative learning - key to long term success



A balance of English language learners and fluent English speakers per class

Program Outline



EAL program for KG2 - Grade 5	
<p>Level A EAL: Entering, Emerging, and Developing (low-mid level)</p> <p>The Level A EAL Program is for beginner English language learners requiring specialized support, including the students' social and emotional needs, to gain the proficiency level needed in order to access the IB and US curriculum.</p>	<p>Level B EAL: Developing, Expanding, and Bridging (mid-high level)</p> <p>The Level B EAL Program is for the mid to high level English language learner who require additional support with the aim to successfully access the IB and US curriculum at their age appropriate grade level, while functioning well at a peer group level academically, socially and culturally.</p>
<ul style="list-style-type: none">▶ Students are integrated in their homeroom except for 80 minutes of English language instruction<ul style="list-style-type: none">• Daily 40 minute English as a Foreign Language class• Additional, daily 40 minute Flex period for responsive language intervention <p>Both of these 40 minute sessions are supported by an EAL teacher and EAL teaching assistant</p> <ul style="list-style-type: none">▶ Resources specifically designed for English language learners	<ul style="list-style-type: none">▶ Full day integration in mainstream classes▶ Reading intervention (as needed)▶ Mandarin or Spanish as a Foreign Language
EAL program for Grade 6 - Grade 8	EAL program for Grade 9 - Grade 10
<ul style="list-style-type: none">▶ Full day integration in mainstream classes▶ MYP Language Acquisition - English (phases 1-5 supported)▶ Additional weekly Academic Labs for responsive English language support▶ Greater teacher to student ratio▶ MYP Language and Literature for Mandarin and Spanish speakers▶ Internal and external language assessments - iTEP SLATE Plus given twice per year	<ul style="list-style-type: none">▶ Full day integration in mainstream classes▶ MYP Language Acquisition - English (multiple phases)▶ Internal and external language assessments - iTEP SLATE Plus given twice per year▶ Multimodal instruction and resources for practical language-embedded experiences▶ After school EAL sessions twice a week

“We really appreciate your efforts with our daughter in EAL. We know it has been a major part in her success.”

Ms. Chang, Parent of EAL student



Stamford American INTERNATIONAL SCHOOL

1 Woodleigh Lane
(Off Upper Serangoon Road),
Singapore 357684

T: +65 6653 7907

E: admissions@sais.edu.sg

W: [https://www.sais.edu.sg/
programs/english-as-
additional-language-eal/](https://www.sais.edu.sg/programs/english-as-additional-language-eal/)



Stamford American International School CPE Registration Number: 200823594D
Period of registration: August 9, 2022 to August 8, 2026

了解更多



詳細



추가 정보



Tìm hiểu thêm

